





**RÉPUBLIQUE  
FRANÇAISE**

*Liberté  
Égalité  
Fraternité*

**INRAE**

**INRAE** >  
> *transfert*

# Summary



P.4 Why support the creation  
of startups at INRAE?

P.5 > 7 Review of startup  
creation

P.8 > 27 Startups born  
from INRAE's results

P.28 > 32 Startups raised  
in INRAE's environment



# Why support start-up creation at INRAE?

A WAY OF CREATING VALUE AND INNOVATION IN LINE WITH THE OBJECTIVE OF SCIENTIFIC RIGOR

An opportunity for scientists and PhD students:

- > To promote their research results and to generate new jobs
- > To discover an entrepreneurial framework and to co-conceive innovations



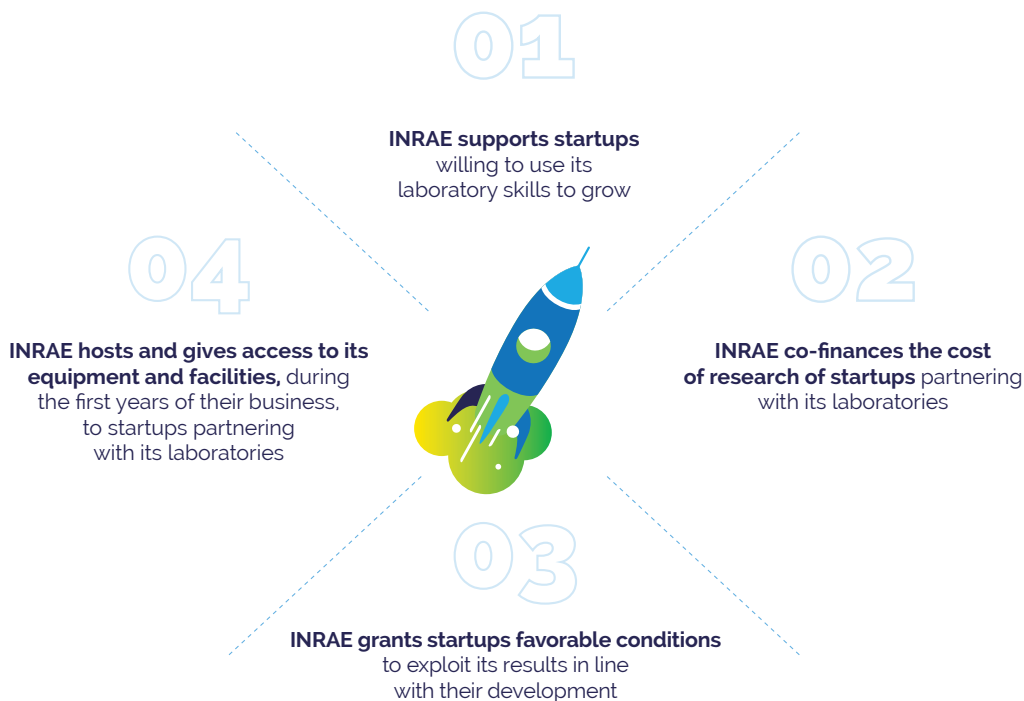
**Create companies from** innovations developed in INRAE's laboratories



**Support external business project leaders** using scientists' skills and the laboratory infrastructure of INRAE



# A clear will to support creation of startups



# Support actions...



## Flash parcours entrepreneuriat INRAE

- **Bénéficier** des retours d'expérience de chercheurs qui sont impliqués dans la création d'entreprise
- **Connaitre** les structures qui peuvent vous accompagner
- **Recueillir** vos idées de projet et vous aider à les faire grandir

Se faire accompagner

Oser

S'inspirer

INRAE > INRAE  
transfert

The «Flash Parcours Entrepreneuriat» are events in INRAE's research centers to inform scientists and PhD students interested in creating a company



INRA TRANSFERT & LES INSTITUTS CARNOT  
PORTÉS PAR L'INRA VOUS ACCOMPAGNENT

## À CHAQUE ÉTAPE DU DÉVELOPPEMENT DE VOTRE START-UP

**TU AS L'ESPRIT ENTREPRENEUR**  
...on te propose des idées !  
CRÉATIVITÉ : Brevet, Projet de recherche, Agence France

**TU AS UNE IDÉE DE START-UP DÉFINIE**  
...on t'accompagne pour la concrétiser  
ENTREPRENRE : Avec passion, l'accompagnement pour passer de l'idée à la réalité  
MATURATION : L'idée à maturité vers une réalité de recherche qui permet de valider et d'adapter son idée

**TU AS CRÉÉ TA START-UP**  
...on te soutient !  
Accompagnement R&D, Projets de recherche, Partenariats, Brevet, etc.

Partnerships with agricultural engineering schools to bring students and INRAE laboratories closer together



# Review of business creation **since 1999**

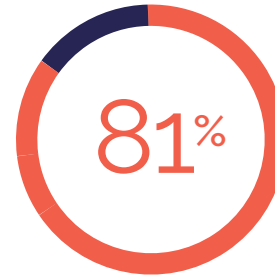
Start-up  
created or linked  
to INRAE



Jobs  
created



Success rate of start-ups  
supported  
by INRAE since 1999







born from **INRAE'S** results



Food



Environment



Agriculture



## Food



*Created in 1999*

Proposes a method for protein production, in particular vaccines, in embryonic somatic avian cell cultures.

The company raised funds and developed collaborations with many pharmaceutical industry players: Sanofi Pasteur, Fort Dodge, Bavarian Nordic, Geovax, GSK, CSL, Nobilon.

[www.valneva.com](http://www.valneva.com)



**IDBiotech**  
Immuno Diffusion Biotechnologies

*Created in 2004*

Develops, manufactures and markets immunochemical kits for the authentication and quality control of raw materials and processed products in the agri-food and pharmaceutical industries.

[www.idbiotech.com](http://www.idbiotech.com)



**kandasao**  
énergie naturelle

*Created in 2005*

Develops innovating products based on sugar cane juice sold in supermarkets.

**vivelys**  
WINE BY DESIGN

*Created in 2004*

Advises viticulture with analysis of the quality potential of plots. Measures the water status of the vine, on the plant or on parts of the plant, correlated with the physicochemical properties of the grape berry and the styles of wine.

[www.vivelys.com](http://www.vivelys.com)

**BioVal**  
Process

*Created in 2010*

Commercializes software controlling a device a device for the determination of acidifying activity and kinetics acidification of microbial cultures.

[www.bioval-process.com](http://www.bioval-process.com)



*Created in 2012*

Develops drugs and biomarkers for the diagnosis of chronic diseases related to anomalies of bowel bacterial composition (bowel metabolic and inflammatory diseases). Enterome has conducted several fundraising campaigns among investors, which made it possible to validate and promote its patented biomarkers in the form of medical diagnosis in Europe and the USA.

[www.enterome.fr](http://www.enterome.fr)

The logo for Sensostat features the company name 'Sensostat' in a bold, sans-serif font, with a stylized orange circular icon integrated into the letter 'o'.

*Created in 2012*

Offers advice and expertise on sensory analysis and statistics for large companies and SMEs. Sensostat carries out sensory studies to better match products to consumer expectations.

[www.sensostat.fr](http://www.sensostat.fr)



*Created in 2014*

Treats severe diseases by using the power of the intestinal microbial ecology. MaaT stands for «Microbiota as a Therapy» and focuses on the use of clinical promises of microbiotherapy to develop innovative solutions to deal with unmet medical needs related to dysbiosis pathologies. MaaT relies on the scientific and technical expertise of over 30 years at INRAE in human digestive tract microbiology.

[www.maatpharma.com](http://www.maatpharma.com)



*Created in 2013*

Analysis of volatile compounds and polyphenols in all sorts of beverage (fermented or not).

[www.twistaroma.fr](http://www.twistaroma.fr)





*Created in 2016*

Develops a new generation of therapeutic probiotics, based on commensal bacterial strains.

[www.exeliombio.com](http://www.exeliombio.com)



*Created in 2016*

Provides software for the acquisition and analysis of sensory data (profile, hedonic tests, Temporal Dominance of Sensations).

[www.timesens.com](http://www.timesens.com)



*Created in 2017*

Identifies the toxic and carcinogenic properties of diverse cosmetic or pharmaceutical products using human cells.

[www.preditox.fr](http://www.preditox.fr)



# IGYXOS

*Created in 2017*

Develops a drug capable of resolving hormonal insufficiencies causing infertility, both in women and in men.

[www.igyxos.com](http://www.igyxos.com)



*Created in 2017*

Provides innovative methods *in silico* to accelerate the discovery and the evolution of biomarkers and therapeutic antibodies.

[www.mabsilico.com](http://www.mabsilico.com)



*Created in 2019*

Develops a gene expression system that could accelerate the development of gene therapy treatments, particularly in the field of cancer treatment.

*Created in 2020*

**CLINICNCELL** : Proposes in-vitro screening of new ingredients with a beneficial effect on health.

[www.clinicncell.com](http://www.clinicncell.com)



# Environment



*Created in 2003*

Offers services and training in multivariate data analysis helping **manufacturers to better control their products** and processes. Its fields of application are agriculture, agronomy, pharmaceuticals and petrochemicals.

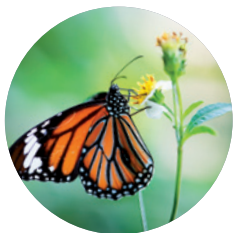
[www.ondalys.fr](http://www.ondalys.fr)



*Created in 2004*

Offers a natural process for the oleothermal treatment of wood. It is intended for sawmills and timber manufacturers by allowing them **first to diversify their range** in response to the growing demand for more environmentally friendly products and second, to provide their products with high added value (thermo-oiled HEQ wood).

[www.oleobois.com](http://www.oleobois.com)



envilys

*Created in 2005*

Promotes the Indigo<sup>®</sup> software which forecasts the impact of cultivation practices on the environment and integrates it in an exchange platform. Using data concerning the size, orientation, treatment of plots, the software allows, among other things, a selection of phytosanitary products more respectful of the environment while integrating the economic and financial constraints of the farm. Envilys has adapted this software to Mediterranean viticulture.

[www.envilys.fr](http://www.envilys.fr)

NASKEO  
environnement

*Created in 2005*

Produce renewable energies from emissions of agro, pharmaceutical and chemical industries. The project leaders have approached the Laboratory of Environmental Biotechnology (INRAE Narbonne), in order to benefit from their expertise in effluent treatment technologies by microbial digestion under anaerobic conditions (or anaerobic digestion).

[www.naskeo.com](http://www.naskeo.com)





*Created in 2008*

Offers specialized services in consultation engineering. Participates in the design, animation and evaluation of all types of projects involving consultation, whether they are land management projects, natural resources or organizations.

[www.lisode.com](http://www.lisode.com)

*Created in 2008*

Conducts, provides and implements innovative solutions for the functional diagnosis, biological treatment and monitoring of soils.

[www.valorhiz.com](http://www.valorhiz.com)



*Created in 2011*

Supports businesses and territories in establishing dialogue and taking agriculture, landscapes and the environment into account in regional projects.

[www.sites.google.com/site/vousetesdici](http://www.sites.google.com/site/vousetesdici)

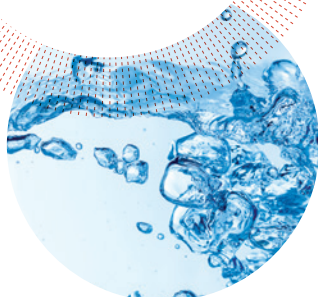




*Created in 2011*

Proposes an integral treatment of wastewater by vermicomposting (ecological purification station), and organic waste treatment (vermicomposting station).

[www.lombritek.com](http://www.lombritek.com)



*Created in 2012*

Offers expertise and advice in the management of vegetation installed on dikes, dams and river banks.

[www.arbeausolutions.fr](http://www.arbeausolutions.fr)



*Created in 2013*

Uses water and nutrient cycle modeling at the scale of the watershed and reactive transport modeling in porous medium.

[www.scheme-rd.fr](http://www.scheme-rd.fr)



*Created in 2013*

Develops and markets software solutions for online monitoring anaerobic digestion facilities.

Several of these technologies come from the Laboratory of

Environmental Biotechnology: installation diagnostic software, data management, sensor-software.

[www.bioentech.eu](http://www.bioentech.eu)

The GreenTropism logo features the text "GreenTropism" in a sans-serif font, with "Green" in blue and "Tropism" in grey. A colorful, multi-colored circle is positioned between the two words.

GreenTropism

*Created in 2014*

Provides manufacturers with easy-to-use and precise spectroscopic analysis software. The software implements predictive models that analyze organic matter instantly and provide reliable results for any type of application or control system.

[www.greentropism.com](http://www.greentropism.com)



*Created in 2014*

Monitors the quality of aquatic environments by assessing chemical contamination and toxicity of micropollutants on living organisms.

[www.biomae.com](http://www.biomae.com)



*Created in 2015*

Supports manufacturers in reducing their environmental footprint through innovative analytical and research services, integrating a complete vision of the life cycle of ingredients and products.

[www.scanae.com](http://www.scanae.com)



*Created in 2015*

Develops a yeast capable of using CO<sub>2</sub> (of atmospheric origin or other) and transform it into molecules for the chemical industry.

[www.enobraq.fr](http://www.enobraq.fr)





*Created in 2018*

Develops plant products that look like yogurts and are made of fermented rice, millet and buck wheat.

[www.nomad-yo.org](http://www.nomad-yo.org)



*Created in 2019*

Uses enzymes produced by a fungus growing in presence of rapeseed oil meals, for several applications such as treating jeans.

[www.oleoinnov.com](http://www.oleoinnov.com)



*Created in 2019*

Offers support in the study, preservation and optimization of the agroeconomic characteristics (physical, chemical and biological) of soils through pedological interventions, training and activities.

[www.sol-et-co.com](http://www.sol-et-co.com)

*Created in 2019*

Supports regional projects using participatory techniques such as **Foncjeu**, forum theater and the Gerdal method (Experimentation and Research Group: Development and Local Actions).





# Agriculture



**PAT**  
Plant Advanced Technologies

*Created in 2005*

Produces innovative and rare active ingredients to cosmetics, pharmaceutical and agrochemical markets.

[www.plantadvanced.com](http://www.plantadvanced.com)

**Biotisa**

*Created in 2005*

Develops, manufactures and markets natural microbial inoculants and innovative biological substrates that promote plant growth, or provide them with protection against pathogens, or can accelerate soil decontamination.

[www.biotisa.com](http://www.biotisa.com)



*Created in 2007*

Provides advice and chemical analysis of vine and wine flavours. Thanks to innovative techniques from the Sciences for Oenology Laboratory at INRAE Montpellier, NYSEOS analyses the aromatic potential of the harvest and the flavours naturally present in the wines.

[www.nyseos.fr](http://www.nyseos.fr)



*Created in 2006*

Performs innovative analytical services in the field of quality control and molecular traceability (agro-food and agronomy).

[www.adnid.fr](http://www.adnid.fr)



*Created in 2009*

Offers revegetation services that contribute to restoring biodiversity.

[www.solicaz.fr](http://www.solicaz.fr)





ReproPHARM VET

*Created in 2009*

Develops products to better master animal reproduction in line with sustainable agricultural practices.

[www.repropharmvet.com](http://www.repropharmvet.com)



Bureau d'Études & Travaux  
de Recherches en Éthologie

*Created in 2011*

Achieves scientific services in ethology and animal welfare for organisations working with animals.

[www.bureau-etre.fr](http://www.bureau-etre.fr)

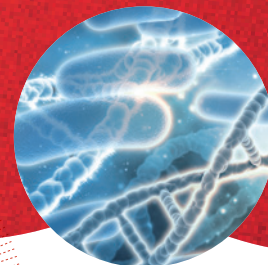


Meiogenix

*Created in 2010*

Biotechnology Spin-off from the Institut Curie and INRAE. Holds a global exclusive license for a technology that modulates the frequency of the homologous recombination in eukaryotic cells. The company has conducted several fundraising campaigns.

[www.meiogenix.com](http://www.meiogenix.com)







*Created in 2012*

Promotes *in-vitro* spermatogenesis research. This work allowed the development of *in-vitro* tests in reprotoxicology from rat cell cultures.

[www.kallistem.com](http://www.kallistem.com)



*Created in 2014*

Provides advice in the field of the environment. Offers environmental diagnosis services, ecosystem monitoring, 3D statements natural habitats.

[www.ecosustain.fr](http://www.ecosustain.fr)



*Created in 2014*

Sells real-time 3D simulation and test benches for the development of mobile robotic systems, drones & intelligent vehicles.

[www.4d-virtualiz.com](http://www.4d-virtualiz.com)



*Created in 2014*

Develops high-throughput plant phenotyping. Among other services, drone observation (Airphen) and wireless sensor observation are today prime means to characterize the functioning of varieties and provide breeders with the information they need.

[www.hiphen-plant.com](http://www.hiphen-plant.com)





*Created in 2014*

Provides knowledge and know-how transfer from research towards territorial actors, to better integrate agriculture into territory projects, for citizens and sustainable development purposes.

[www.vi-a-terra.jimdosite.com](http://www.vi-a-terra.jimdosite.com)



*Created in 2019*

Develops innovative DNA-based vaccines, boosting and optimizing the immune responses of the vaccinee, and showing unmatched vaccine properties against AIDS-like viruses. The patented technology has a strong differentiating advantage because there are no alternative strategies to combat the targeted diseases.



**MYCOPHYTO**

*Created in 2017*

Implements plant production systems that do not need chemical inputs (fertilizers, pesticides) by optimizing the natural synergy between plants and fungi.

[www.mycophyto.fr](http://www.mycophyto.fr)



*Created in 2019*

Provides the truffle industry with the innovations developed in the laboratory. Composed of a team of experts in the biology and biotechnology of fungi, it offers a complete and appropriate range of services, incorporating technological innovations.

[www.wetruf.com](http://www.wetruf.com)



*Created in 2019*

Furnishes an R&D precision agriculture outsourcing solution.

[www.aspexit.com](http://www.aspexit.com)



*Created in 2020*

Offers innovative ecological expertise in soil quality based on a microbiological diagnosis for sustainable soil management in both agricultural and urban contexts.

[www.novasol-experts.com](http://www.novasol-experts.com)

*Created in 2019*

Develops sustainable and innovative solutions to protect field crops.

[www.agriodor.com](http://www.agriodor.com)

The logo for agriodor, featuring the word "agriodor" in a bold, lowercase, sans-serif font. The "a" is green, and the "griodor" is dark green. To the right of the logo is a circular inset image showing a lush green field of crops under a blue sky. The entire logo and image are centered within a large, dotted red circle.



raised in **INRAE's** environment



Food



Environment



Agriculture



# Food







# Food



ALSO:

- > LES CREMERIES UNIES
- > LES ENZYMES JOYEUSES
- > NOVOBIOME



LES 3 CHOUETTES







# Environment





# Agriculture





**INRAE Transfert, the Technology Transfer Unit of INRAE,** has supported 122 creations of innovative companies by looking for suitable partnering and technology transfer modalities at the beginning of their activity, if necessary linked with the incubator involved

**176 of these companies  
are still active**

We thank our partners  
for their support







INRAE