



RÉPUBLIQUE
FRANÇAISE

Liberté
Égalité
Fraternité

INRAE



UMR1392

INRAE, CNRS, IRD, SORBONNE UNIVERSITÉ, UNIVERSITÉ PARIS CITÉ,
UNIVERSITÉ PARIS-EST CRÉTEIL

Institute of Ecology and Environmental Sciences of Paris (iEES-Paris)

Sensory Ecology Department

Management of the iEES-Paris unit

Martine MAIBECHE, head

Management of the Sensory Ecology Department

Emmanuelle Jacquin-Joly, head

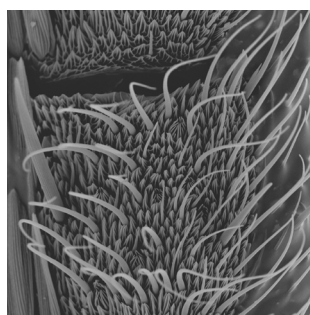
Key Figures

- 12 scientists including assistant professors and professors
- Around 10 PhD and post-doctoral students
- 3 engineers
- 7 technicians and administrative staff
- 2 locations:
 - INRAE IdF-Versailles-Saclay
 - Sorbonne-Université Jussieu, Paris

Mission and objectives

The main objectives of the iEES-Paris unit are to analyze and model the organization, operation and ecological changes of environmental systems. The unit is structured in 5 departments, and the INRAE staff from the Sensory Ecology department are located on the INRAE Versailles campus.

The Department of Sensory Ecology of iEES-Paris develops research in the field of insect chemical ecology. This department studies the so-called "chemical" senses (olfaction and taste) which are essential for insects to interact with each other, to interpret their environment and to adapt to new ecological niches. Activities are balanced between fundamental research (sensory neurobiology) and applied outputs in crop protection against insect pests.



Pictures : © iEES-Paris, M. Renou, © iEES-Paris, M.C. François & C. Monsimpes

The objectives of the Sensory Ecology department are:

- to understand how insects detect their chemical environment
- to evaluate how phenotypic and genotypic variations allow them to adapt to a complex and changing environment
- to propose solutions for insect crop pest biocontrol and early detection, using classical and innovative semiochemicals and tools.



Centre
Île-de-France - Versailles-Saclay



Route de Saint-Cyr
78000 Versailles
Tél. : + 33 (0)1 30 83 00 00

www.inrae.fr/en/centres/ile-france-versailles-saclay