



RÉPUBLIQUE
FRANÇAISE

Liberté
Égalité
Fraternité

INRAE

université
PARIS-SACLAY



UR1303

INRAE

Social Sciences and Food (ALISS)

Management

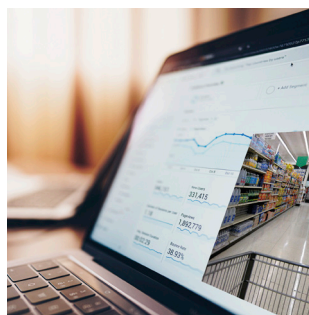
Olivier ALLAIS, head
Christine BOIZOT-SZANTAI, deputy
head

Key figures

- 12 researchers
- 2 PhD and post-doctoral students
- 9 engineers
- 3 technicians and administrative staff
- 1 platform Odalim

Mission and objectives

ALISS is a research unit in economics and sociology applied to the food sector. Its objective is to understand the behaviors and strategies of actors in the food system, and to contribute to the development and evaluation of public policies. The work carried out in the unit deals with consumers as well as firms in the sector (distributors and producers), and helps to shed light on the debate and policies on the numerous issues associated with food: public health, environment, inequalities, sectoral and competition policies.



ALISS stands out for the diversity of its methodologies: econometrics, experiments, formalized analysis, interviews, and simulations. Its research relies on strong competencies in the design, constitution and management of databases which put the unit today at a central place in terms of food data platforms within INRAE. The unit is present in several local, national and international research networks; it benefits from a strong visibility with public decision makers in the fields of nutritional, environmental, sectoral and competition policies (vertical relations).



Centre
Île-de-France - Versailles-Grignon



Route de Saint-Cyr
78000 Versailles
Tél. : + 33 (0)1 30 83 00 00

www.inrae.fr/centres/ile-france-versailles-grignon



RÉPUBLIQUE
FRANÇAISE

Liberté
Égalité
Fraternité

INRAE

université
PARIS-SACLAY



UR1303



Food Science
& Engineering



Territories, Governance,
Innovation in Society

Topics

Research

Common organization with Economie Publique due to the merger of the two units.

Research Area 1: Sustainable diets

The work carried out in this area analyses the possible conditions for a change in diet, in a context of increasing product differentiation. The aim is to understand the determinants of consumers' dietary behaviour and their consequences on demand, social inequalities, health and the environment.

Research Area 2: Sustainable production systems

This research models the relationships between the supply of agricultural products and the environment. It is based on theoretical work (environmental economics and public economics) and applied at different scales (landscape, France, EU) integrating spatial and inter-individual heterogeneity of production conditions. Adaptation to climate change and the reduction of greenhouse gas emissions are central.

Research Area 3: Agricultural markets and agri-food chains

This area analyses the consequences of changes (input prices, regulations) on international agricultural markets and along the production chain, from agricultural raw material markets to distribution. This research is related to industrial organization and international trade, and is combined in an original way with development economics and demand economics.

Cross-cutting Research Area: Evaluation of public policies

The evaluation of public policies is a common issue for the three Research Area. The evaluations carried out deal with the different levels of the food system: farmers, agri-food companies, distributors, or/and consumers. The evaluations can be either prospective (ex-ante) or retrospective (ex-post) and the answers provided are largely based on empirical research.

Cross-cutting Research Area: Data and quantitative methods

Data and the quantitative methods associated with their processing are essential to research in economics and social sciences and beyond. This research area, through the Odalim platform, facilitates access to and use of data by proposing tools for matching data and promoting the dissemination of quantitative methods.

Collaboration

ALISS researchers participate in several ANR and European projects and are involved in national, European and international collaborations.

One of the original features of ALISS is the development of collaborations with other disciplines (nutrition, sensory and consumer science and food science) which have led to the creation of joint projects.

Teaching

The researchers of the unit teach at the University of Paris-Saclay (Master in Environment, Energy and Transport Economics and Master in Economics), as well as at the Institut Polytechnique de Paris (Master in Economics, Cycle Ingénieur Polytechnicien).



Centre
Île-de-France - Versailles-Grignon